

Examining the Ethical Implications of the Burden of Heat Wave-Related Illnesses in Indigenous Communities in Puruliya, West Bengal India

Dr. Sajda Khatoon

Research Officer

Centre for Public Health Research-MANT

India



BACKGROUND

Number of heat wave days (annually) 1969-2019

Setting

Selected blocks of Puruliya : Bundwan, Manbazar-I, Manbazar-II and Puncha

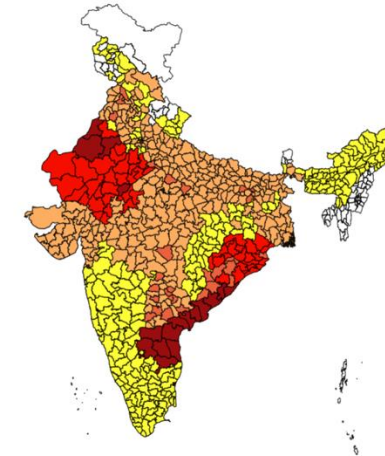
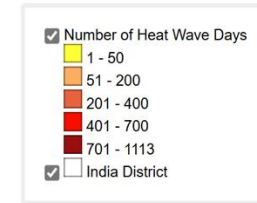
Aim

Understanding the impact of heat waves on Indigenous communities and their coping mechanisms



Findings

Indigenous population experienced increased incidences of- exhaustion, dehydration, headaches, fever and dizziness



West Bengal
51-200
heatwave days
annually

Source: <https://imdpune.gov.in/hazardatlas/heatnew.html>

Estimated **1,116 deaths** annually (95 %CI, 861; 1361) attributed to heatwaves during **2008-2019**

(Source: de Bont J, Nori-Sarma A, Stafoggia M, Banerjee T, Ingole V, Jaganathan S, Mandal S, Rajiva A, Krishna B, Kloog I, Lane K. Impact of heatwaves on all-cause mortality in India: A comprehensive multi-city study. Environment international. 2024 Feb 1;184:108461).

61 killed as brutal heatwave grips several States in north

23 persons involved in the polling process died of heat-related causes; with temperatures rising to 47 degrees Celsius, people of Jharsuguda, Odisha have been asked to stay indoors during the day

Updated - June 01, 2024 07:03 am IST Published - May 31, 2024 10:17 pm IST - NEW DELHI

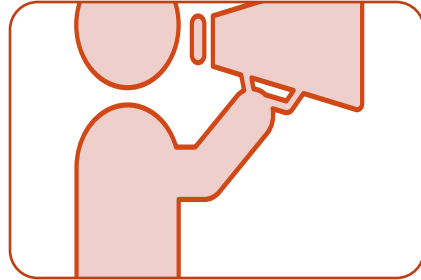
Source: <https://www.thehindu.com/news/national/heatwave-claims-61-lives-across-india-in-a-day/article68237169.ece>



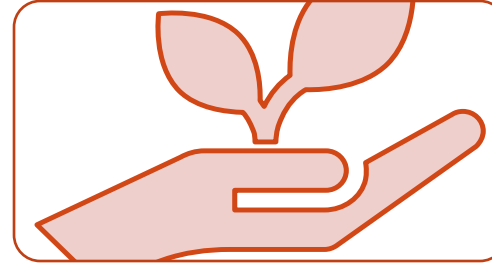
ETHICAL ISSUES



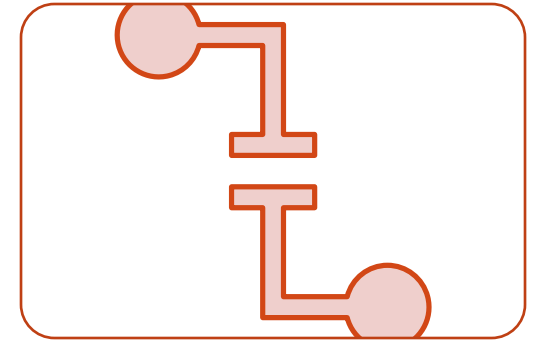
Justice and fairness in research agenda



Indigenous voices in shaping research questions and strategies



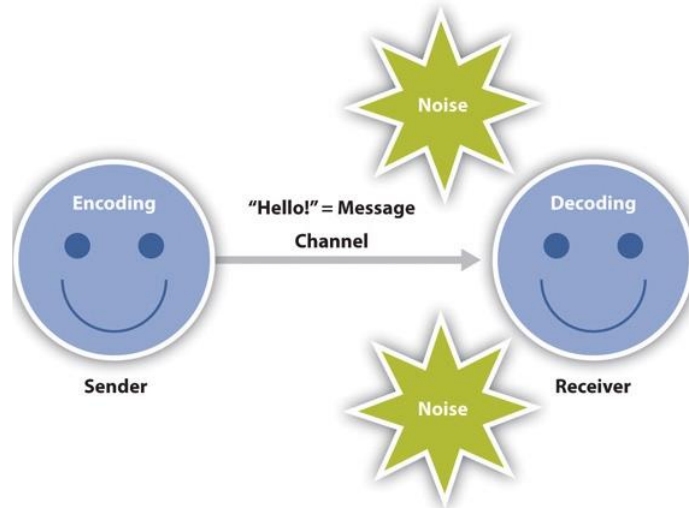
Specific needs, customs, and environmental realities of Tribal People



Non-alignment of programs with the community's traditional knowledge systems



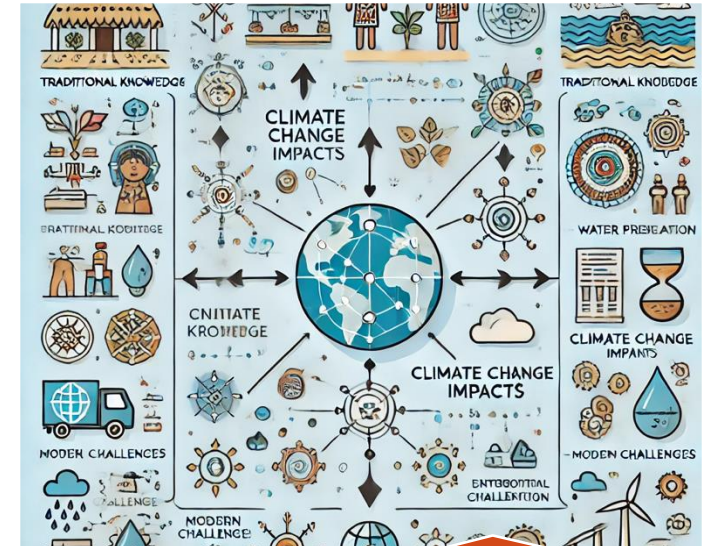
ADDRESSING THESE WILL INVOLVE OVERCOMING



Communication
barrier



Equitable
stakeholder inclusion



Traditional coping
mechanisms



COMMUNICATION BARRIER

The Trust
Factor

The
uniqueness
of each
Indigenous
community

Trained
local tribal
facilitators



National Symposium on Tribal Health, 2023



EQUITABLE STAKEHOLDER INCLUSION

- Active involvement in all research phases—from **planning to dissemination**.
- Grassroots Science Advice Promotion Awards from International Network for Governmental Science Advice (INGSA-Asia).



- ❖ Data availability and accessibility
- ❖ Community media led by tribal women.

Nityanada Janavani (Radio Station)



Srimonti Hembram

1st woman tribal radio jockey in the country at our radio station



RESEARCH GOVERNANCE



Research governance requires a multi-faceted approach



Long-term research commitments for tangible benefits



A localized
ethical review
process
ensured
Indigenous
voices

Community
input from
tribal villages
assemblies
(*'Kulhidurup'*)



Tribal Village assembly



SOLVING RESEARCH GOVERNANCE ISSUE....



CONCLUSION

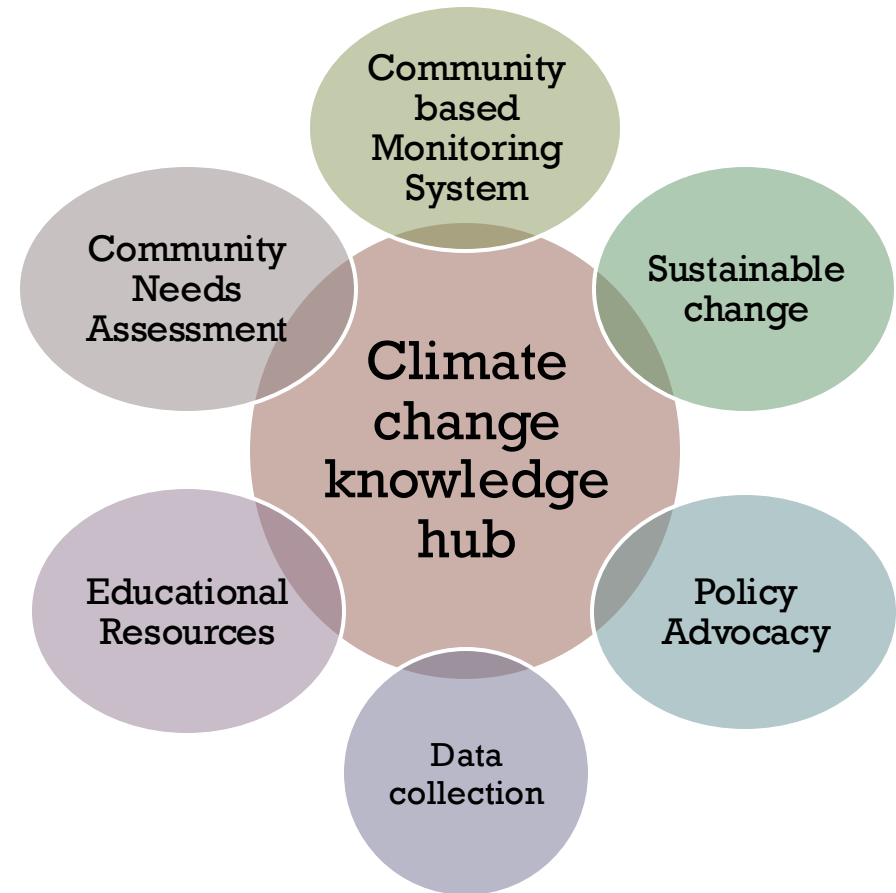
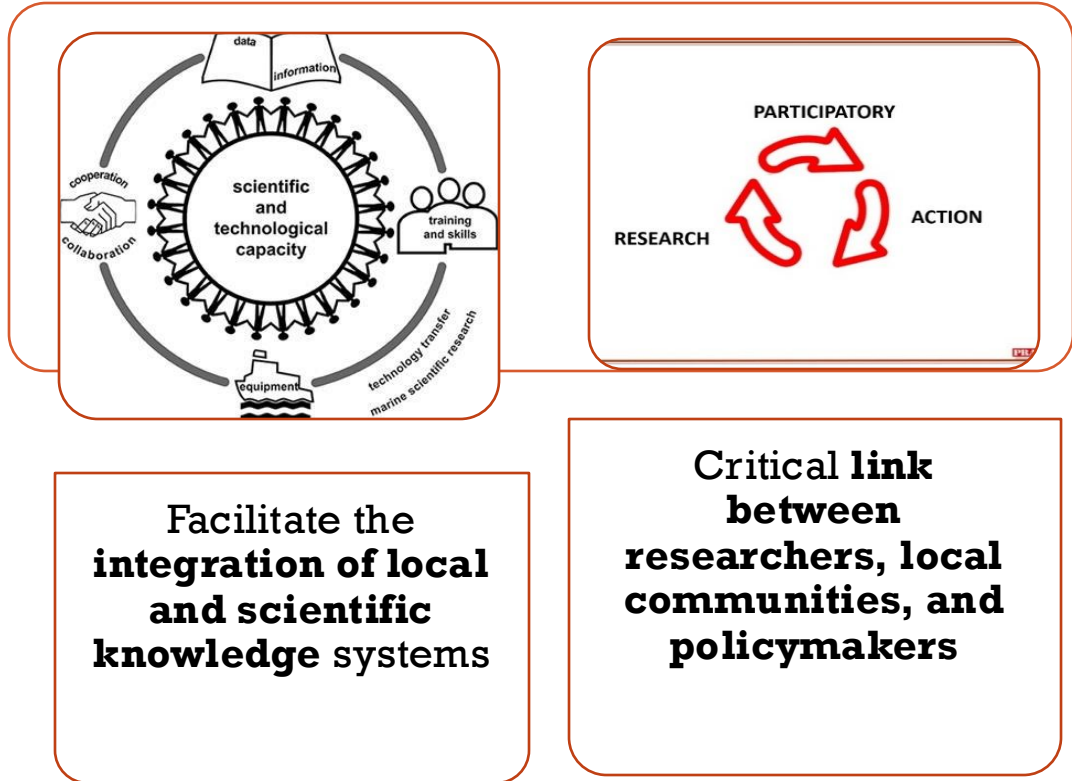
The severe impact of heatwave-related illnesses in Indigenous communities

Need for community engagement and the integration of Indigenous knowledge with scientific research



RECOMMENDATIONS

1. Establish a Local Climate Health Knowledge Hub



2. COMMUNITY-BASED MONITORING SYSTEMS



Local resources and technologies, to track climate variables and health outcomes in real-time



Empower communities by making them active participants in monitoring and responding to health risks and ensuring timely interventions and adaptations based on accurate, localized data.



3. SOCIAL RETURN ON INVESTMENT EVALUATION



Policy Making and Programme Support



Long-term funding for heat and climate change related efforts





Thank you

Contact Details

sajda@cphr-mant.org

cphr.mant@gmail.com

