



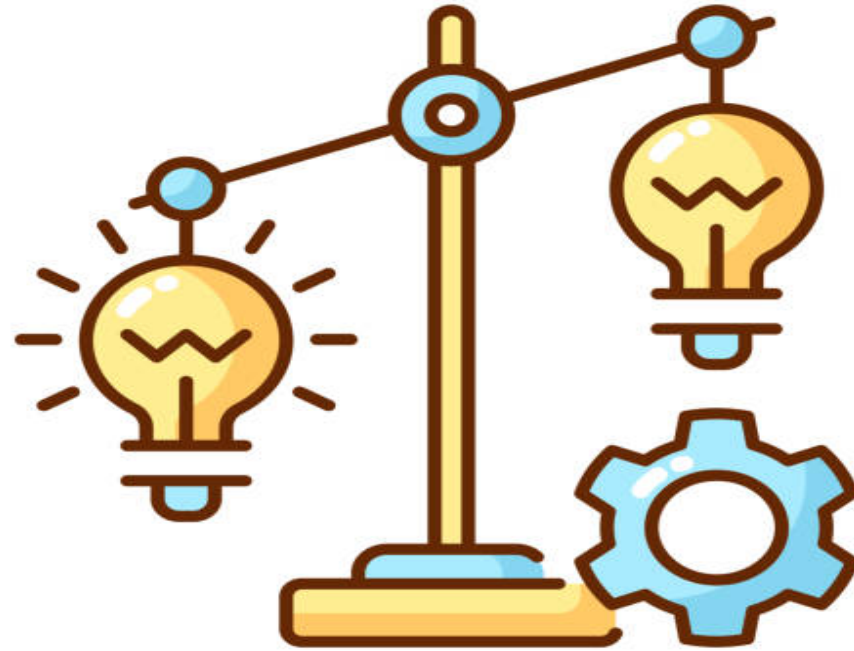
**Upholding autonomy and beneficence in  
research priority setting exercises in  
Ghana**

Benedict Weobong, School of Public Health,  
University of Ghana

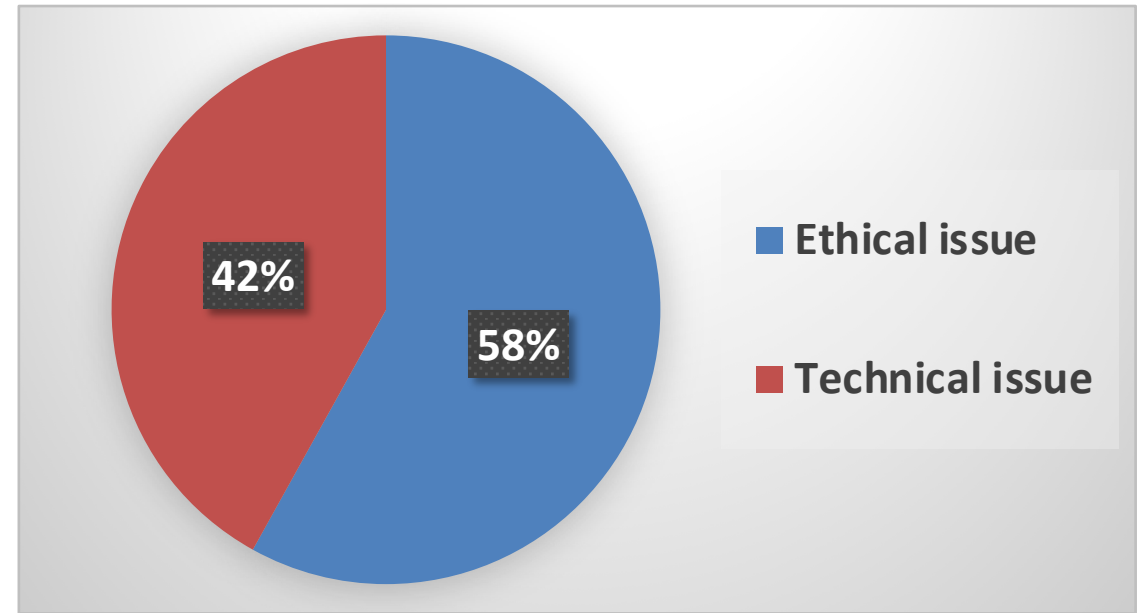
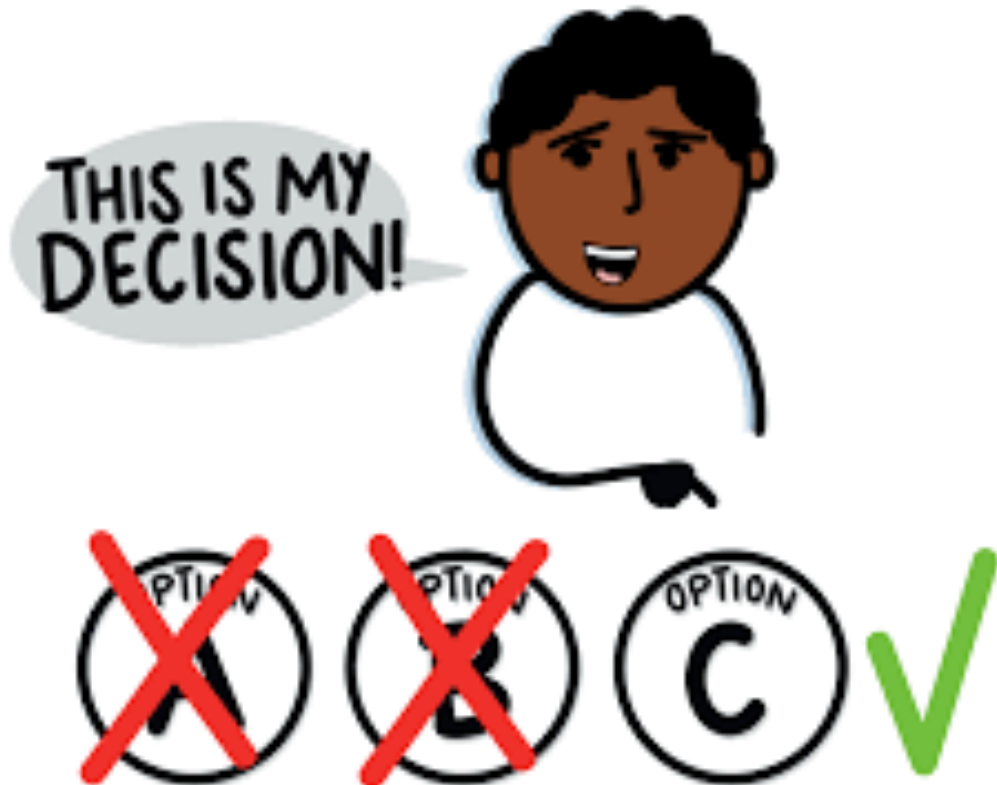
---

**How to  
reverse the  
'guilty'  
verdict**

An ethical imperative; not just a technical issue!



# The numbers do not lie.....!



**Priority setting** occurs any time someone **makes a decision** or recommendation about how to allocate a **scarce resource**

---

A matter of s/he who pays the piper.....!



# Concerns with disparities in [Mental Health] research investments...



**Under-funded**

**Vulnerable**

**Ethical imperative**



# Protecting a good cause







**Pursuing an ethical imperative- Upholding autonomy and beneficence in research priority setting exercises in Ghana.**



# Aim

To identify mental health and disability research priorities for Ghana within the context of the prevailing research ecosystem

ORIGINAL ARTICLE

 OPEN ACCESS  Check for updates

**Mental health and disability research priorities and capacity needs in Ghana: findings from a rapid review and research priority ranking survey**

Benedict Weobong <sup>a</sup>, Kenneth Ae-Ngibise <sup>b,c</sup>, Grace Mwangi<sup>d</sup>, Lionel Sakyi<sup>b</sup> and Crick Lund <sup>e,f</sup>

---



# Upholding Autonomy



Inclusivity



Ownership



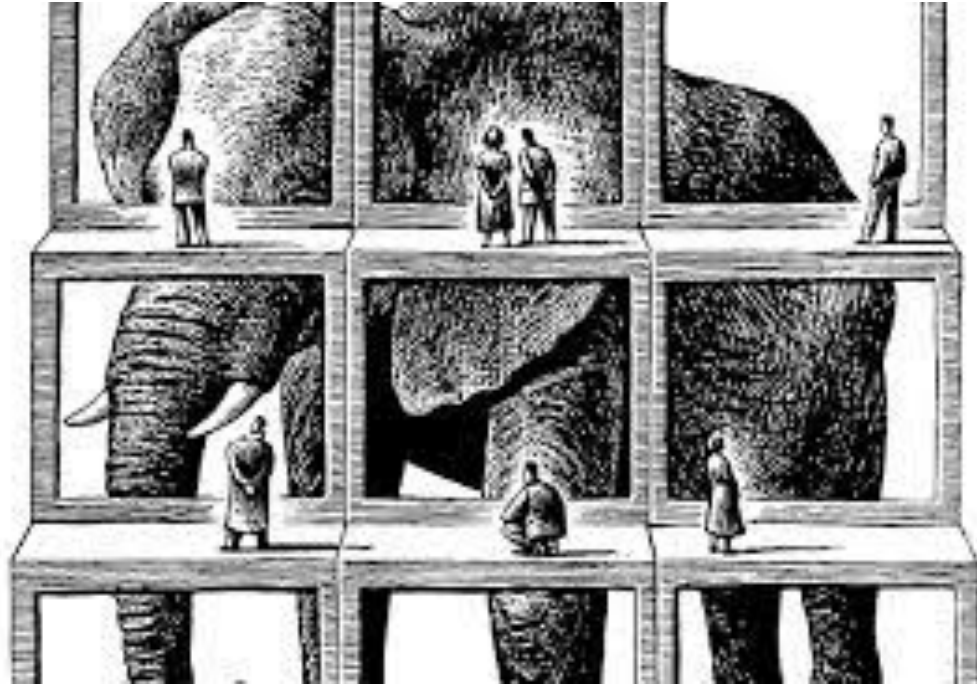
# Upholding Autonomy



Ownership

---

# Beneficence



Criteria

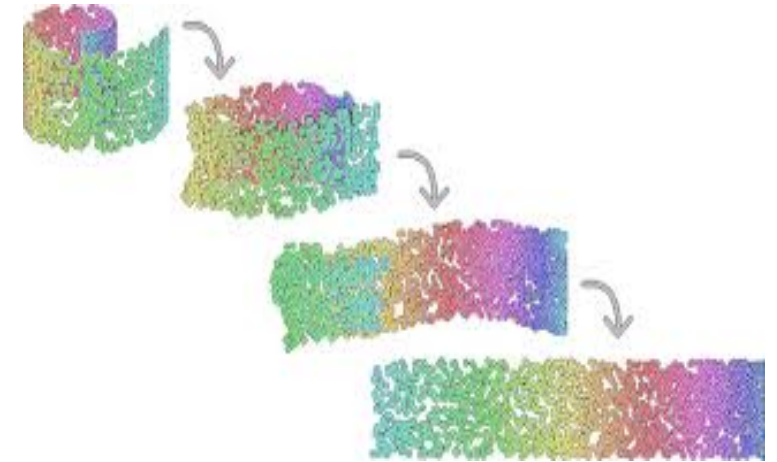
Goals



# A challenging process



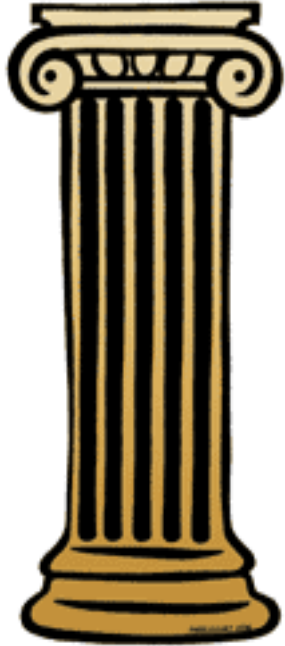
Participation



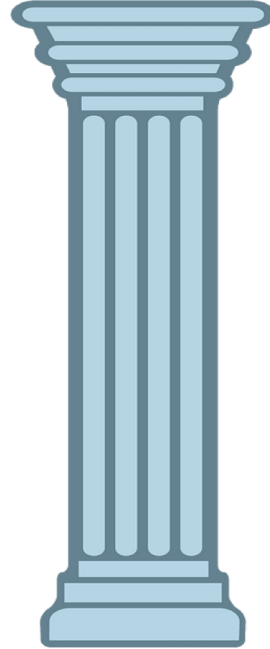
Data reduction



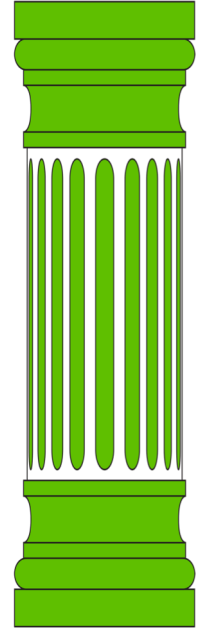
# What we learnt



Deliberate & inclusive



Proven methodology



Context





Pursuing the goal of an ethical imperative-informed research priority setting IS **feasible/achievable**

---

Funded with UK Aid from the  
UK government

